

Submittal Record

Job: _____

Location: _____

Submitted To: _____

Submittal Prepared By: _____

Approved By: _____

Date: _____



Damper Regulator Specification Form


KWIKI™ - Sets up to 10" x 10" damper - Residential

Part#	Product Description	Qty.	
<input type="checkbox"/> 307963	KWIKI REGULATOR (KH-1)	100 Sets/Case	
Includes: KWIKI handle (100) KWIKI wingnut (100) KWIKI washer steel (100) KWIKI gasket economy bearing (100)			
<input type="checkbox"/> 307961	KWIKI SET (KHS-1)	100 Sets/Case	
Includes: KWIKI Regulator (KH-1) (100) KWIKI Retracting Bearing (KM-1) (100)			
<input type="checkbox"/> 307962	KWIKI ECONOMY (KHSB-1)	100 Sets/Case	
Includes: KWIKI Regulator (100) KWIKI Economy Bearing (100)			

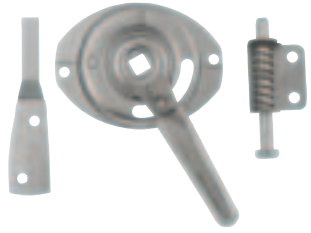
MINI DIAL™ - Sets up to 10" x 10" damper - Residential

Part#	Product Description	Qty.	
<input type="checkbox"/> 307981	MINI DIAL SET 1/4" (MS-1)	100 Sets/Case	
Includes: MINI DIAL Regulator 1/4" (100) Spring Slide Bearing 1/4" (100)			
<input type="checkbox"/> 307982	MINI DIAL SET LONG 1/4" (MS-1L)	100 Sets/Case	
Includes: MINI DIAL Regulator 1/4" (100) Spring Slide Bearing Long 1/4" (100)			

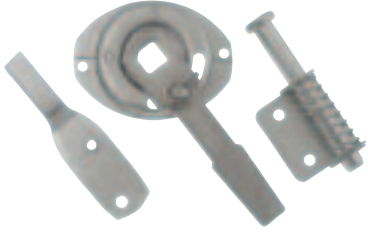
MINI DIAL™ - Parts up to 10" x 10" damper - Residential

Part#	Product Description	Qty.	
<input type="checkbox"/> 307983	MINI DIAL REGULATOR 1/4" (MB-14)	100/Case	
<input type="checkbox"/> 307984	MINI DIAL REGULATOR LONG 1/4" (MB-14L)	100/Case	

DIAL-A-MATIC™ - Sets up to 10" x 10" damper - Commercial


Part#	Product Description	Qty.	
<input type="checkbox"/> 308003	DIAL-A-MATIC SET 1/4" (DRS-25) Includes: DIAL-A-MATIC Dial 1/4" (100) Square End Bearing 1/4" (100) Spring Slide Bearing 1/4" (100)	100 Sets/Case	
<input type="checkbox"/> 308004	DIAL-A-MATIC SET LONG 1/4" (DRS-25L) Includes: DIAL-A-MATIC Dial 1/4" (100) Square End Bearing Long 1/4" (100) Spring Slide Bearing Long 1/4" (100)	100 Sets/Case	

DIAL-A-MATIC™ - Sets up to 20" x 20" damper - Commercial

Part#	Product Description	Qty.	
<input type="checkbox"/> 308005	DIAL-A-MATIC SET 3/8" (DRS-38) Includes: DIAL-A-MATIC Dial 3/8" (100) Square End Bearing 3/8" (100) Spring Slide Bearing 3/8" (100)	100 Sets/Case	
<input type="checkbox"/> 308006	DIAL-A-MATIC SET LONG 3/8" (DRS-38L) Includes: DIAL-A-MATIC Dial 3/8" (100) Square End Bearing Long 3/8" (100) Spring Slide Bearing Long 3/8" (100)	100 Sets/Case	

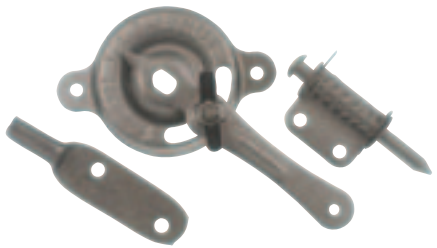
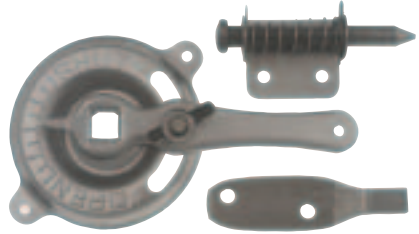

DIAL-A-MATIC™ - Sets up to 20" x 20" damper - Commercial

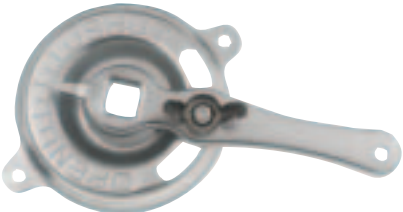
Part#	Product Description	Qty.
<input type="checkbox"/> 305522	LARGE DIAL-A-MATIC SET 3/8" (LDRS-38)	100 Sets/Case
Includes: DIAL-A-MATIC Dial 3/8" (100) Square End Bearing Long 3/8" (100) Spring Slide Bearing 3/8" (100)		



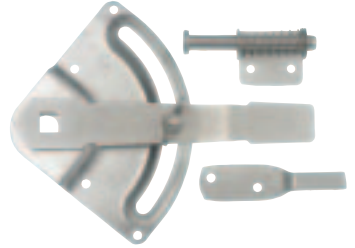
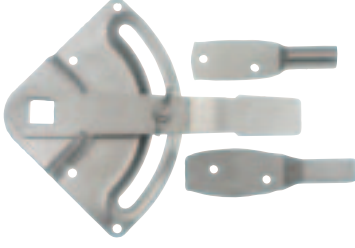
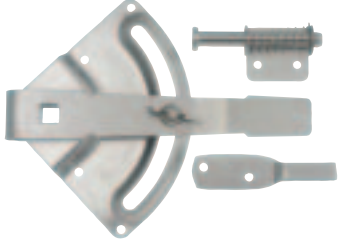
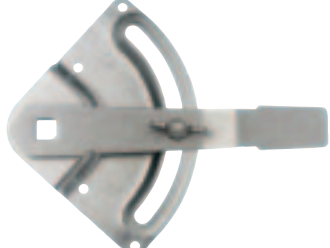
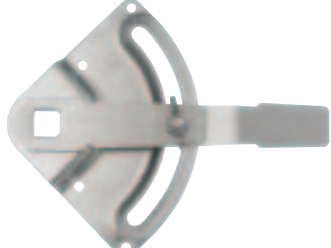
STAINLESS STEEL DIAL-A-MATIC™ - Sets 1/4" up to 10" x 10" damper - Commercial Sets 1/8" up to 20" x 20" damper - Commercial

Part#	Product Description	Qty.
<input type="checkbox"/> 305473	DIAL-A-MATIC SET STAINLESS STEEL 1/4" (DRSS-25)	25 Sets/Case
Includes: DIAL-A-MATIC Dial 1/4" (100) Square End Bearing 1/4" (100) Spring Slide Bearing 1/4" (100)		
<input type="checkbox"/> 305474	DIAL-A-MATIC SET STAINLESS STEEL 3/8" (DRSS-38)	25 Sets/Case
Includes: DIAL-A-MATIC Dial 3/8" (100) Square End Bearing 3/8" (100) Spring Slide Bearing 3/8" (100)		
<input type="checkbox"/> 308007	DIAL-A-MATIC DIAL 1/4" (D-25)	100/Case
<input type="checkbox"/> 308009	DIAL-A-MATIC DIAL 3/8" (D-38)	100/Case
<input type="checkbox"/> 305366	DIAL-A-MATIC DIAL 3/8" (LDR-38)	100/Case

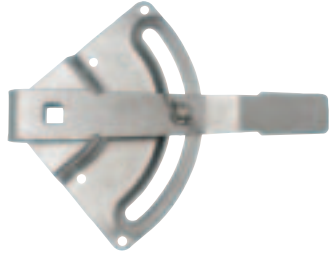
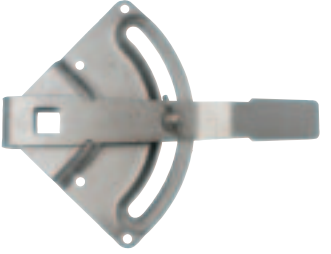
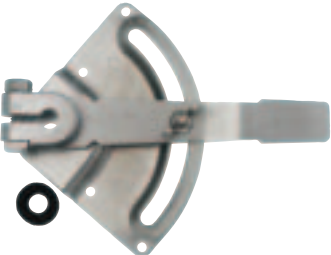
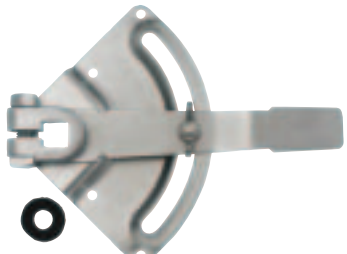







DYN-A-QUADS™ - 3/8" Single Shear Quadrant Regulator up to 20" x 20" damper - Commercial
 1/2" Single Shear Quadrant Regulator up to 30" x 30" damper - Commercial

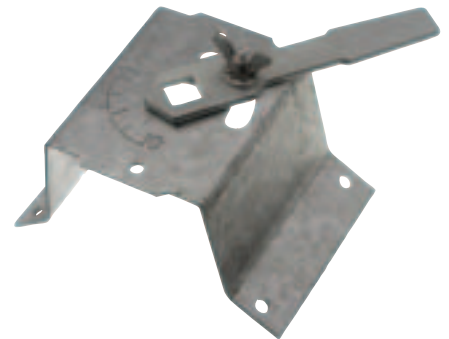
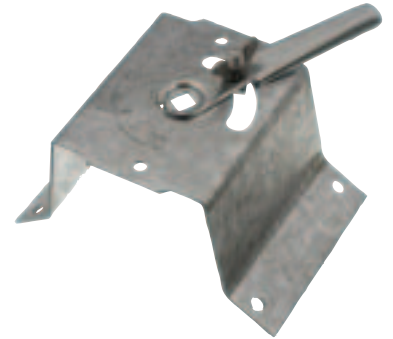
Part#	Product Description	Qty.	
<input type="checkbox"/> 308027	DYN-A-QUAD SINGLE SHEAR SET 3/8" (DQS-38) Includes: DYN-A-QUAD Single Shear 3/8" (50) Square End Bearing 3/8" (50) Spring Slide Bearing 3/8" (50)	50 Sets/Case	
<input type="checkbox"/> 308024	DYN-A-QUAD SINGLE SHEAR SET 1/2" (DQS-12) Includes: DYN-A-QUAD Single Shear 1/2" (50) Square End Bearing 1/2" (50) Round End Bearing 1/2" (50)	50 Sets/Case	
<input type="checkbox"/> 308030	DYN-A-QUAD DOUBLE SHEAR SET 3/8" (DQS-385DS) Includes: DYN-A-QUAD Quadramatic Double Shear 3/8" (50) Square End Bearing 3/8" (50) Spring Slide Bearing 3/8" (50)	50 Sets/Case	
<input type="checkbox"/> 308028	DYN-A-QUAD SINGLE SHEAR 3/8" (Q-38)	50/Case	
<input type="checkbox"/> 308025	DYN-A-QUAD SINGLE SHEAR 1/2" (Q-50)	100/Case	

DYN-A-QUAD™ - 3/8" Double Shear Quadrant Regulator up to 20" x 20" damper - Commercial
 1/2" Double Shear Quadrant Regulator up to 30" x 30" damper - Commercial

<input type="checkbox"/>	Part#	Product Description	Qty.	
	308031	DYN-A-QUAD QUADRAMATIC DOUBLE SHEAR 3/8" (QDS-38)	100/Case	
<input type="checkbox"/>	Part#	Product Description	Qty.	
	308041	DYN-A-QUAD QUADRAMATIC DOUBLE SHEAR 1/2" (QDS-50)	50/Case	
<input type="checkbox"/>	Part#	Product Description	Qty.	
	308042	DYN-A-QUAD CLAMPMATIC ROUND 3/8" (QC-38R)	50/Case	
<input type="checkbox"/>	Part#	Product Description	Qty.	
	308044	DYN-A-QUAD CLAMPMATIC SQUARE 1/2" (QC-50S)	50/Case	
<input type="checkbox"/>	Part#	Product Description	Qty.	
	308043	DYN-A-QUAD CLAMPMATIC ROUND 1/2" (QC-50R)	50/Case	

STAND OFF REGULATOR

Part#	Product Description	Qty.
<input type="checkbox"/> 305513	STAND OFF REGULATOR 1/4" x 1 1/2" (SOR-25-150)	100/Case
<input type="checkbox"/> Part#	Product Description	Qty.
305514	STAND OFF REGULATOR 1/4" x 2" (SOR-25-200)	100/Case
<input type="checkbox"/> Part#	Product Description	Qty.
305515	STAND OFF REGULATOR 3/8" x 1 1/2" (SOR-38-150)	100/Case
<input type="checkbox"/> Part#	Product Description	Qty.
305516	STAND OFF REGULATOR 3/8" x 2" (SOR-38-200)	50 Sets/Case



STAND OFF REGULATOR - With Dial

Part#	Product Description	Qty.
<input type="checkbox"/> 305517	STAND OFF REGULATOR W/DIAL 1/4" x 1 1/2" (SORD-25-150)	100/Case
<input type="checkbox"/> Part#	Product Description	Qty.
305518	STAND OFF REGULATOR W/DIAL 1/4" x 2" (SORD-25-200)	100/Case
<input type="checkbox"/> Part#	Product Description	Qty.
305519	STAND OFF REGULATOR W/DIAL 3/8" x 1 1/2" (SORD-38-150)	100/Case
<input type="checkbox"/> Part#	Product Description	Qty.
305520	STAND OFF REGULATOR W/DIAL 3/8" x 2" (SORD-38-200)	100 Sets/Case

