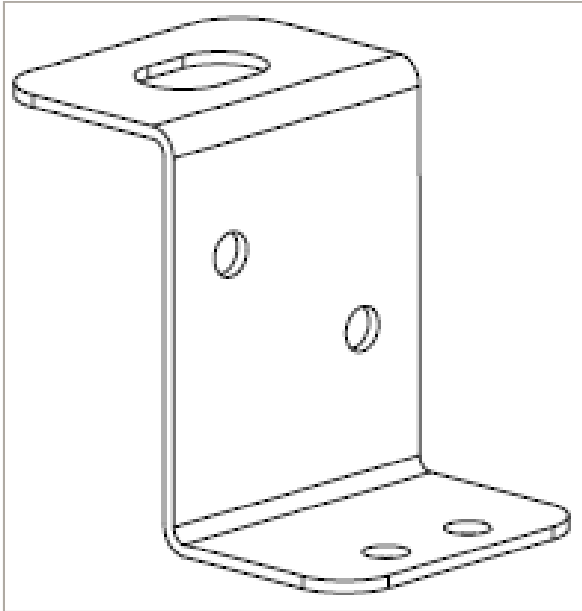


# GRIPPLE® Trapeze Bracket [ Part #317656 ]



## APPLICATION

Replaces use of hanger strap for suspension of rectangular ductwork. Works in conjunction with Gripple's Trapeze Fastener System\* (i.e. Trapeze Fastener and length of cable with pre-attached end fixing). Trapeze Brackets attach easily to each side of the ductwork with screws at four points.

## PRODUCT FEATURES

- Bracket allows easy post-installation up or down height adjustment of the ductwork via the Trapeze Fastener and Cable System\*.
- Brackets can be pre-attached to ductwork prior to installation or during installation.

## SAFE WORKING LOAD

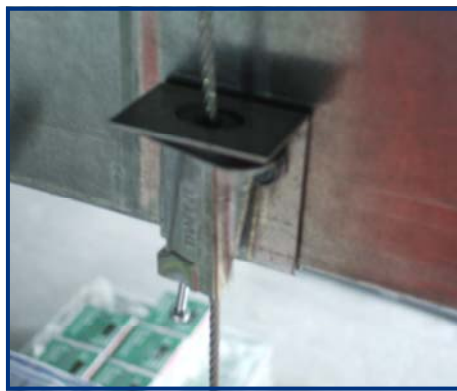
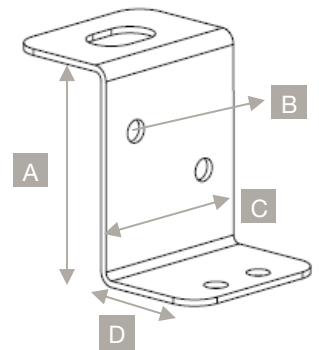
The Trapeze Bracket works in conjunction with the No.3 Trapeze Fastener System\*, which has a maximum Safe Working Load of 200 lbs.

Code	Size	Maximum SWL
HF-BRACKET-TPZ-US	No. 3	200 lbs

## SPECIFICATIONS

Manufactured from 16 gauge galvanized steel. Galvanized finish to ASTM A123 standards.

A (in.)	B (in.)	C (in.)	D (in.)
1 57/64"	7/32"	1 1/2"	1"



**Carlisle HVAC Products 900 Hensley Lane Wylie, TX 75098**

**Toll Free: (800) 527-7092 Customer Service: (888) 229-0199 Fax: (972) 442-0076**

**www.hardcast.com**